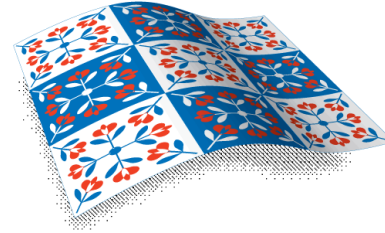


BUTLER COUNTY



FAMILY &
CHILDREN
FIRST COUNCIL

Accessing Resources for Families in Butler County - and beyond

Heather Wells, Butler Co. FCFC

United Way 211



- Easy to remember, three digit phone number
- 2-1-1 serves as the first point of contact for information and referral to the health and human service delivery system
 - Connects callers to information, services and volunteer opportunities
- Callers can get help or give help 24 hours a day, seven days a week, 365 days a year
 - Certified, well-trained Information & Referral Specialists quickly assess the caller's needs and refer them to the help they seek

United Way 211 Comprehensive Resource Database

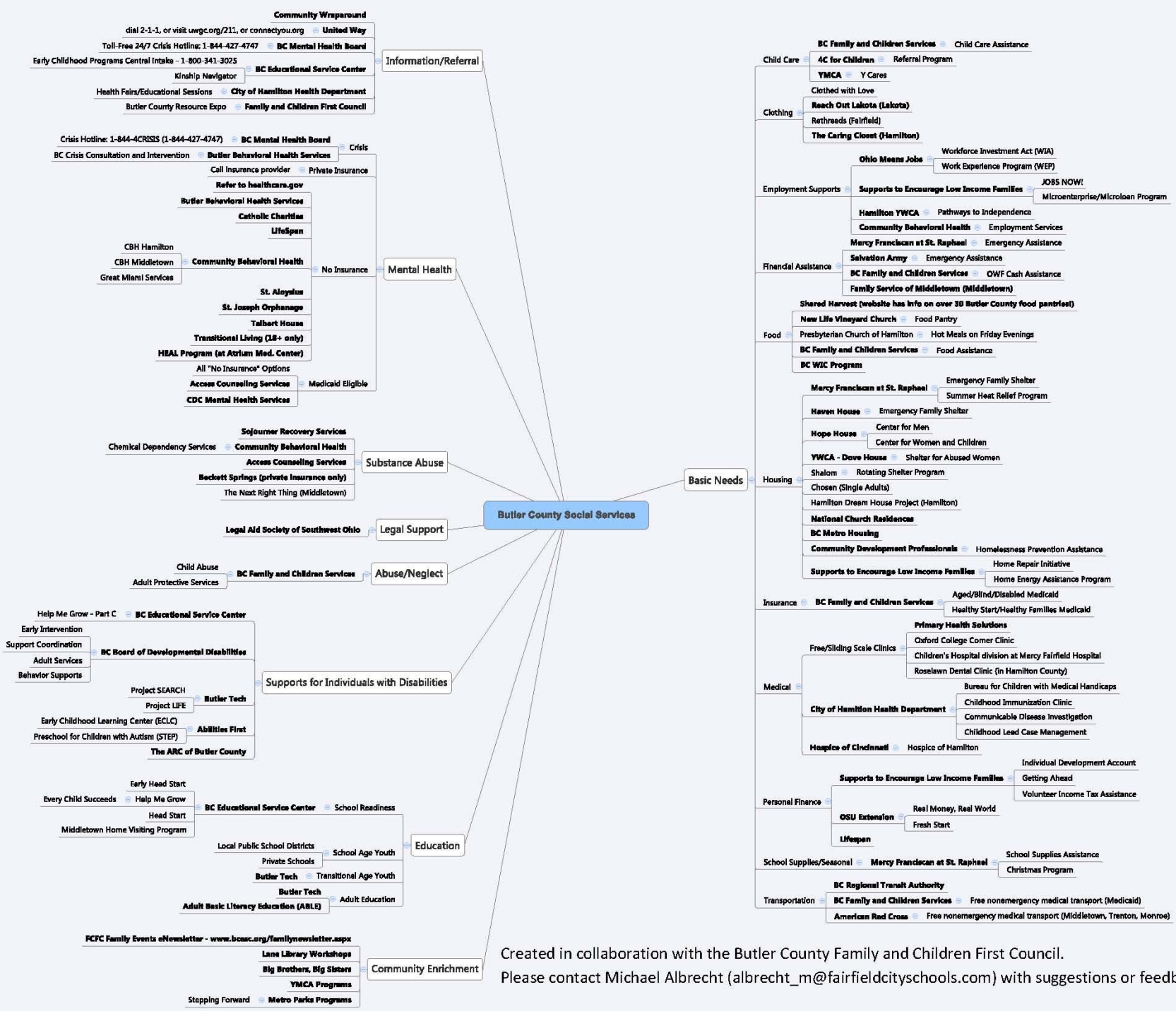
- ▶ Comprehensive resource database with information on over 2,000 health and human services
- ▶ A valuable resource for service providers, law enforcement, legislators, school personnel, and government officials to assist them in helping people they serve
- ▶ An easy-to-use searchable database is now accessible through our Web site at www.uwgc.org/211
- ▶ Services can be found by zip code, city, category, service, or the name of an agency or program

Family & Children First Council



- ▶ Website (www.bcesc.org/fcfc.aspx)
- ▶ Facebook Page (www.facebook.com/BCFCFC)
- ▶ Forum on Families & Children (for professionals) [E-newsletter](#)
- ▶ Free/Low Cost Events and Resources (for families) [E-newsletter](#)
- ▶ Service Coordination for children with special needs (Wraparound).
Call Tom Jenne with any questions (513-887-5514; jennet@bcesc.org)
- ▶ Butler County Social Services Resource Expo
- ▶ Heather Wells, Butler County FCFC: wellsh@bcesc.org; 513-887-5534;
513-509-3378

Available on-line at:
www.bcesc.org/CrossSystems.aspx



Created in collaboration with the Butler County Family and Children First Council.
 Please contact Michael Albrecht (albrecht_m@fairfieldcityschools.com) with suggestions or feedback.

Mental Health and Addiction

- ▶ Butler County Mental Health and Addiction Recovery Services Board (www.bcmhb.org)
 - ▶ Provider Services Guide ([pdf](#))
- ▶ Ohio Department of Mental Health and Addiction Services (www.mha.ohio.gov)
 - ▶ Addiction Services Providers by County
 - ▶ Mental Health Services Providers by County

Special Populations

- ▶ Butler County Board of Developmental Disabilities F.A.N.S. Network: butlerdd.org/services/volunteer/FANS.php
- ▶ Jason's Connection: www.jasonsconnection.org/
- ▶ CCHMC Special Needs Resource Directory: www.cincinnatichildrens.org/patients/child/special-needs/directory/default/
- ▶ OCALI Family Center (autism & low incidence disorders): www.ocali.org/center/family

Regional and State wide resources

- ▶ Benefit Bank (<http://www.ohiobenefits.org/>): The Ohio Benefit Bank™ is designed to make it simpler for people in Ohio to connect with programs and resources for which they may be eligible.
- ▶ QuickCheck
 - ▶ Potential eligibility calculator estimates eligibility for work supports and tax credits
 - ▶ Based on household size, income and expenses
 - ▶ Uses a five-star rating to indicate the likelihood that a person is eligible for one or more benefit
 - ▶ Identifies a Benefit Bank site that the person can go to for assistance with application for benefits.

Programs Supported by the OBB

- ▶ USDA Child Nutrition Programs
- ▶ Food Assistance (SNAP)
- ▶ Supplemental Security Income/Social Security Disability Insurance
- ▶ Women, Infants, and Children (WIC)
- ▶ Healthcare programs for families and children
- ▶ Bureau for Children with Medical Handicaps (BCMh)
- ▶ Child and Family Health Services
- ▶ Medicare Savings Program
- ▶ Extra Help for Medicare Part D
- ▶ Ohio Senior Community Service Employment Program
- ▶ Golden Buckeye Program
- ▶ Home Energy Assistance Program (HEAP)
- ▶ Ohio Cash Assistance (OWF)
- ▶ Child Care Assistance
- ▶ Vocational Rehabilitation Services
- ▶ Big Brothers Big Sisters “Amachi”
- ▶ Veterans Education Benefits
- ▶ Free Application for Federal Student Aid (FAFSA)
- ▶ Free tax filing (federal and state, including e-filing and back taxes)
- ▶ The Ohio Youth and Young Adults in Transition Universal Plan



Ohio's **LARGEST**
charitable
response to
hunger!

Regional and State-Wide Resources

- ▶ The Ohio Benefits website (<https://benefits.ohio.gov>) will enable residents to check eligibility and apply for a variety of benefits. The State of Ohio will continue to introduce new features and services on this website over the next two years. Provides links and resources to help with money, food, housing, healthcare, education & training, childcare, legal services and more.
- ▶ 4C for Children (www.4cforchildren.org): Phone and on-line search for child care providers
- ▶ RedTreehouse (www.Redtreehouse.org): Redtreehouse.org was created to provide a welcoming and vibrant online community for families and professionals to explore resources to help children and young adults, prenatal through age 25.

Veteran Services and Employment

- ▶ Butler County Veterans Services Commission - www.bcvets.org
- ▶ Ohio Department of Veterans Services - dvs.ohio.gov
- ▶ OhioMeansJobs | Butler County- the "one-stop" career center for all of your employment and training needs.
www.workforceoneofbutlercounty.com
 - ▶ On-line job search

Questions?

